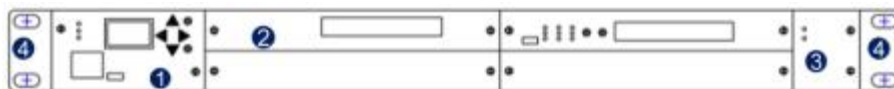


Coherent Chassis

1 Machine frame information

1.1 Machine frame appearance description

1.1.1 1U Machine frame



1U Front panel



1U Side panel



1U Back panel

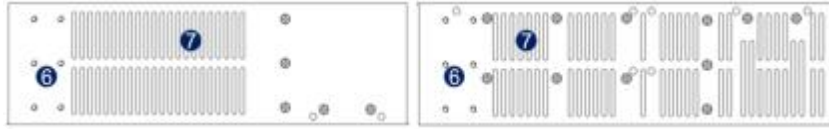
Explain:

- ①NMU card slot
- ②Business card slot,maximum support four business cards, our business cards all can be mixed interpolation and hot swappable
- ③Fan slot,Support for fan hot swap and independent replacement
- ④Scalable lug ⑤Lug instillation position ⑥Side vent
- ⑦Power 1 slot,can plug in AC power supply or DC power supply, support hot swap
- ⑧Power 2 slot,can plug in AC power supply or DC power supply, support hot swap
- ⑨Grounding screw

1.1.2 2U Machine frame



2U Front panel



2U Side panel

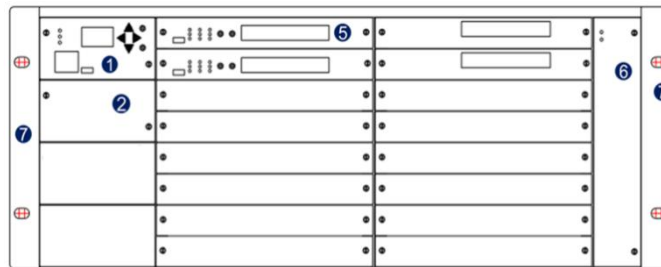


2U Back panel

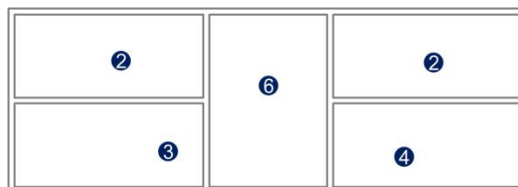
Explain:

- ①NMU card slot
- ②Expansion slot,can plug in eight Ethernet switch cards or other cards
- ③Business card slot,maximum support eight business cards,all our business card can be mixed interpolation,hot swappable
- ④Fan slot,Support for fan hot swap and independent replacement
- ⑤Scalable lug ⑥Lug instillation position ⑦Side vent
- ⑧Power 1 slot,can plug in AC power supply or DC power supply, support hot swap
- ⑨Power 2 slot,can plug in AC power supply or DC power supply, support hot swap
- ⑩Grounding screw

1.1.3 4U Machine frame



4U Front panel



4U Back panel

Explain:

- ①NMU card slot
- ②Expansion slot,can plug in eight Ethernet switch cards or other cards
- ③Power 1 slot,can plug in AC power supply or DC power supply, support hot swap
- ④Power 2 slot,can plug in AC power supply or DC power supply, support hot swap
- ⑤Business card slot,maximum support sixteen business cards,all our business card can be mixed interpolation,hot swappable
- ⑥Fan slot,Support for fan hot swap and independent replacement
- ⑦Scalable lug

1.2 Machine frame correlation parameter

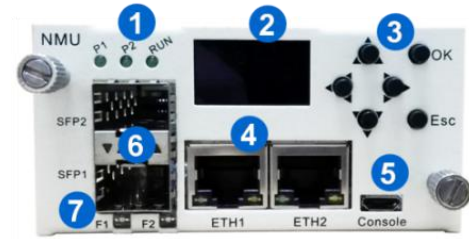
Parameters		Unit	Specifications
Environmental parameter	Working temperature	°C	-10~ 60°C
	Storage temperature	°C	-40°C~ 85°C
	Relative temperature	°C	5% ~ 95% No condensation
Size	1U	mm	482.6W×300D×44.5H
	2U	mm	482.6W×300D×86H
	4U	mm	482.6W×300D×176H
Power Supply	AC	V	100~240,50~60hz
	DC	V	36~72
Consumption	1U	W	< 50 (Max)
	2U	W	< 100 (Max)
	4U	W	< 200 (Max)

1.3 Machine Frame Component

1.3.1 Network management

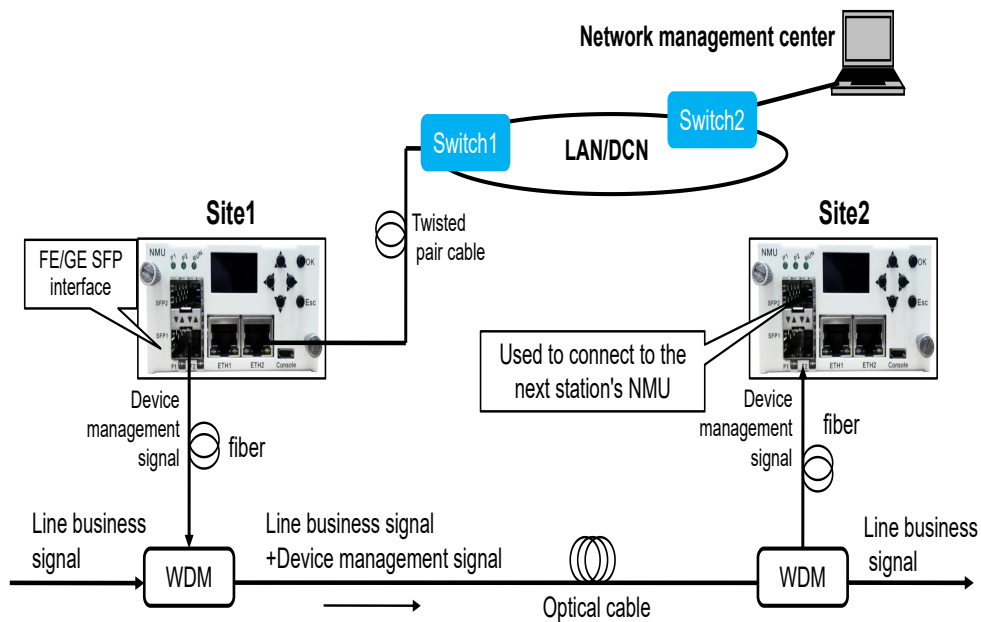
1.3.1.1 NMU instructions

- ①Equipment status indicator: P1 (Power1) 、P2(Power2)、RUN
- ②HD dual color LCD display screen
- ③Operation keys
- ④Ethernet communication interface
- ⑤Micro USB equipment upgrade interface
- ⑥Optical transceiver slot (Support 100/1000Mbps SFP)
- ⑦Optical transceiver working status indicator

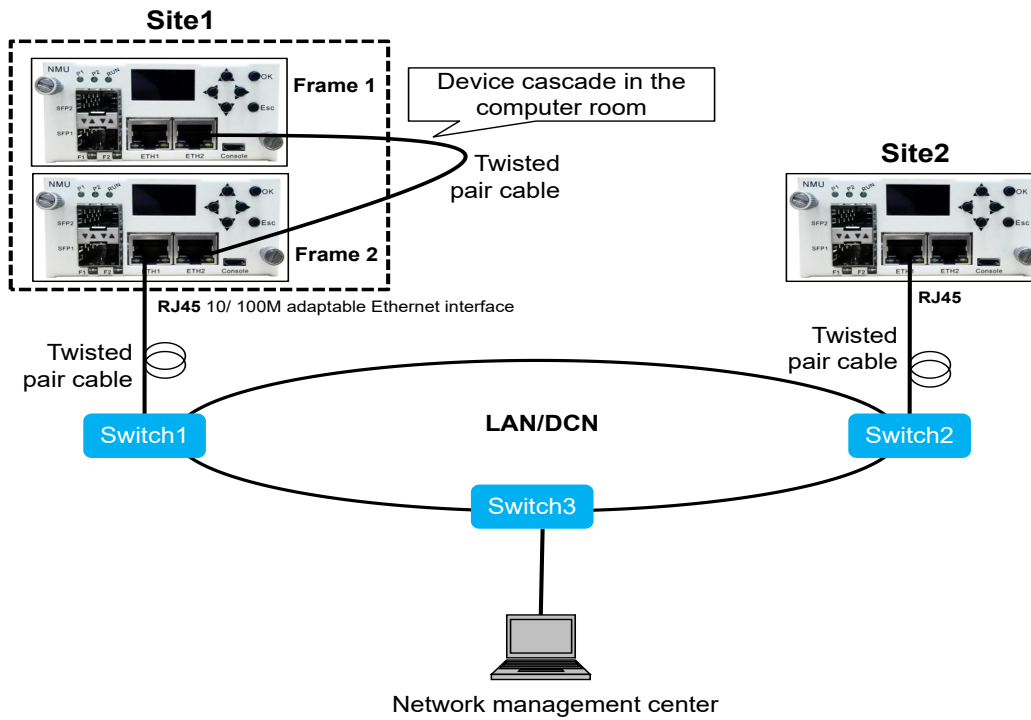


Note:

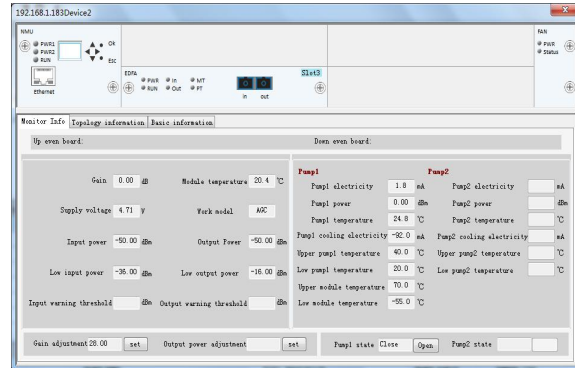
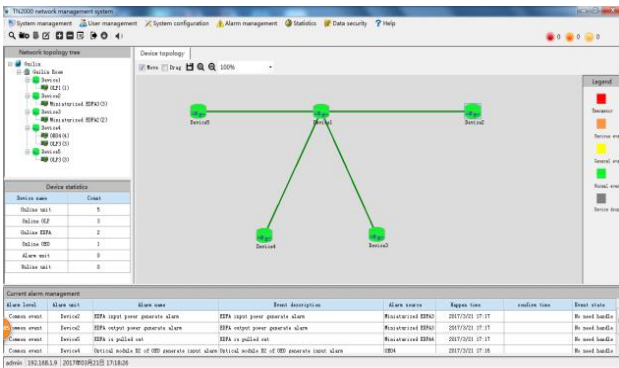
1. Equipment state, card performance can be visible completely;
 2. Card parameters can be set by panel.
- The equipment management signal and business signal use the same optical fiber transmission



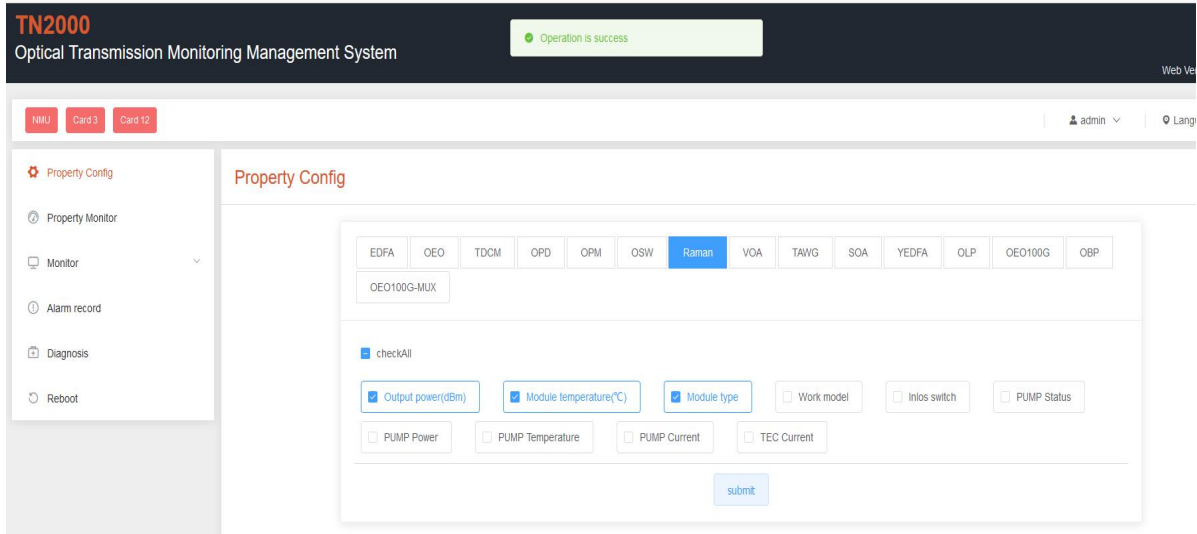
- Equipment management signal and business signal are transmitted independently



1.3.1.2 Professional integrated network management Software



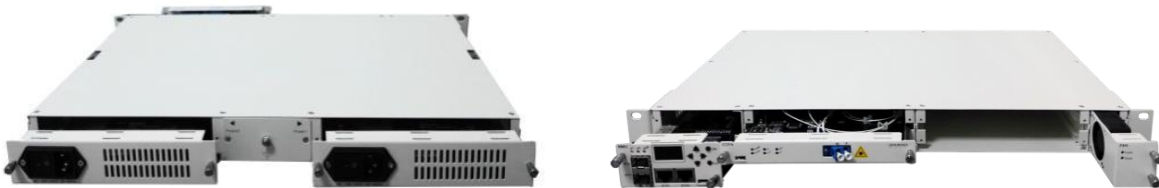
1.3.1.3 Web management



1.3.2 Equipment management

- Equipment state, card performance can be visible completely
- Card parameters can be set by panel
- Support in or out of band network management
- Supports SNMP, Client

1.3.3 Product mix



Note: Customers can configure 2U and 4U boxes according to requirements.

Parameters		Unit	Specifications	Remark
Card capacity	1U	pcs	Max 4	For only 1 slot card
	2U	pcs	Max 8	
	4U	pcs	Max 16	
Size	1U	mm	482.6W×300D×44.5H	19"
	2U	mm	482.6W×300D×86H	19"
	4U	mm	482.6W×300D×176H	19"