

GigaC™ MPO / MTP Cassette Module

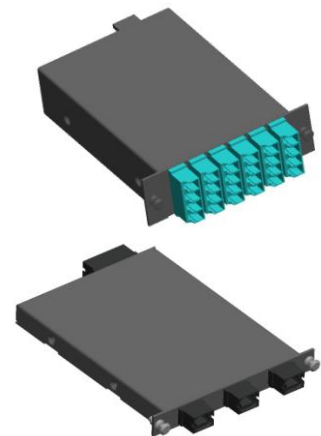
1. Overview

The Gigalight's GigaC™ MPO / MTP Cassette Modules provide secure transition between MPO / MTP and LC or SC discrete connectors. They provide a quick, reliably, high performance and efficient way to deploy up to 24 LC or 12 SC fiber ports in a single module. The Modules can be mounted in 1U, 2U, 3U or 4U 19" multi-slot chassis. They are available in Multi-mode and Single-mode cable.



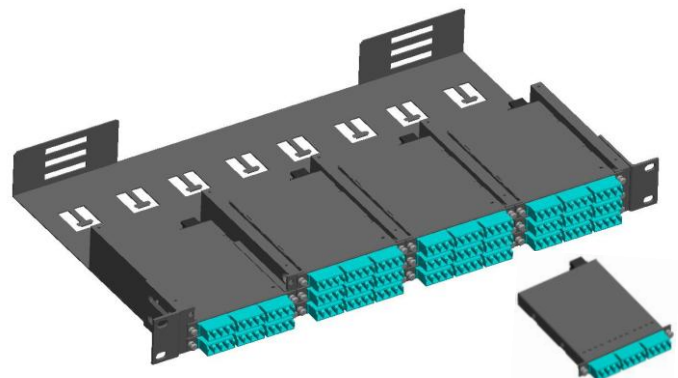
2. Features

- ◆ High-density and small design, Easy and fast installation.
- ◆ Available in 12 / 24 / 48 fiber versions.
- ◆ Field connections with guaranteed quality and simplifies fiber routing.
- ◆ Modular system management, easy reconfiguration for moves, adds, and changes.
- ◆ Customized fiber polarity in the module.



3. Applications

- ◆ Data Centre Infrastructure.
- ◆ High Density Fiber Management.
- ◆ Telecommunications networks and Broadband / CATV networks.
- ◆ LAN/WAN Premises



4. Performance

➤ **MPO / MTP Termination:**

Type	Single-mode (APC polish)		Single-mode (PC polish)		Multi-mode (PC polish)	
Fiber count	4,8,12, 24 ,48 etc.		4,8,12, 24,48 etc.		4,8,12, 24,48 etc.	
Fiber type	G652D,G657A1, etc.		G652D,G657A1, etc.		62.5/125,OM2,OM3,OM4, etc.	
Maximum Insertion Loss	Elite / Low Loss	Standard	Elite / Low Loss	Standard	Elite / Low Loss	Standard
	≤0.35 dB	≤0.70 dB	≤0.35 dB	≤0.70 dB	≤0.35 dB	≤0.5 dB
	0.25 dB Typical	0.5 dB Typical	0.25 dB Typical	0.5 dB Typical	0.2 dB Typical	0.35 dB Typical
Return Loss	≥55 dB		≥45 dB		≥20 dB	
Durability	≥200 times		≥200 times		≥200 times	
Test Wavelength	1310nm / 1550nm		1310nm / 1550nm		850nm / 1300nm	

➤ **Generic Connector Termination:**

Type	Single-mode (APC polish)		Single-mode (UPC polish)		Multi-mode (UPC polish)	
Fiber type	G652D,G657A1, etc.		G652D,G657A1, etc.		62.5/125,OM2,OM3,OM4, etc.	
Maximum Insertion Loss	Low Loss	Standard	Low Loss	Standard	Low Loss	Standard
	≤0.1 dB	≤0.30 dB	≤0.1 dB	≤0.30 dB	≤0.1 dB	≤0.30 dB
	0.05 dB Typical	0.25 dB Typical	0.05 dB Typical	0.25 dB Typical	0.05 dB Typical	0.25 dB Typical
Return Loss	≥60 dB		≥50 dB		≥25 dB	
Durability	≥500 times		≥500 times		≥500 times	
Test Wavelength	1310nm / 1550nm		1310nm / 1550nm		850nm / 1300nm	

*** Above performance and structure refer to Gigalight standard grade performance, flexible specification is available to fit for different installation needs. ***

5. Ordering information

[1] **[2]** **[3]** **[4]** **[5]** **[6]**
GMC - **X-XX-X** - **XXX** - **XX** - **XXX/XXX** - **XXX/XXX**

- (1) TYPE: GigaC™ MPO/MTP Cassette
- (2) INSERTION LOSS TYPE: 0=Standard, 1=Elite / Low Loss
FIBER COUNT: 04=4-fiber, 08=8-fiber, 12=12-fiber, 24=24-fiber, D12=2*12-fiber, D24=2*24-fiber, etc.
MTP/MPO CONNECTOR TYPE: M=Male, F=Female, H=Male to Female
- (3) FIBER TYPE: SM1=G652D, SM2=G657A1, SM3=G657A2,
MM1=OM1(62.5/125), MM2=OM2(50/125), MM3=OM3(50/125), MM4=OM4(50/125),
- (4) CABLE JACKET TYPE: HY=Hytrel, OR=Riser(OFNR), OP=Plenum(OFNP),
LS=LSZH, NA=No jacket
- (5) A-END CONNECTOR: MTP/APC=MTP APC Polishing, MTP/PC=MTP PC Polishing,
MPO/APC=MPO APC Polishing, MPO/PC=MPO PC Polishing
- (6) B-END CONNECTOR: LC/APC, LC/UPC, SC/APC, SC/UPC, FC/APC, FC/UPC, MPO, MTP, etc.

E-mail: sales@gigalight.com.cn

Web : <http://www.gigalight.com.cn>