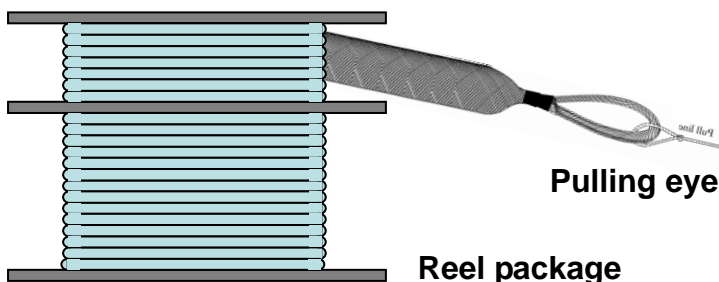
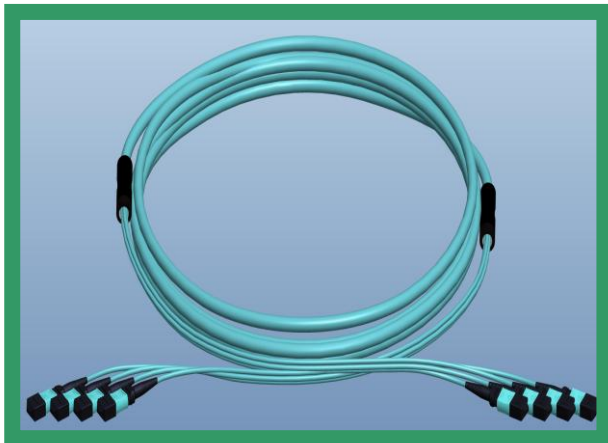
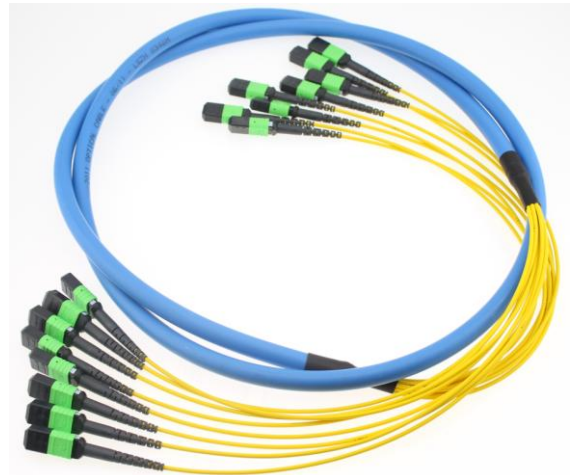


GigaC™ MPO / MTP Trunk Cable

1. Overview

The Gigalight's GigaC™ Trunk Cable is part of high density structure cabling solution in data center, there are MPO to MPO and MPO to hybrid types. Plug and Play Reels, Pulling eye are designed to be quickly pulled and connected to Plug and Play Modules and Adapter Plates. GigaC™ MPO/MTP trunk cable are terminated and tested guaranteed quality for your data center cabling system.



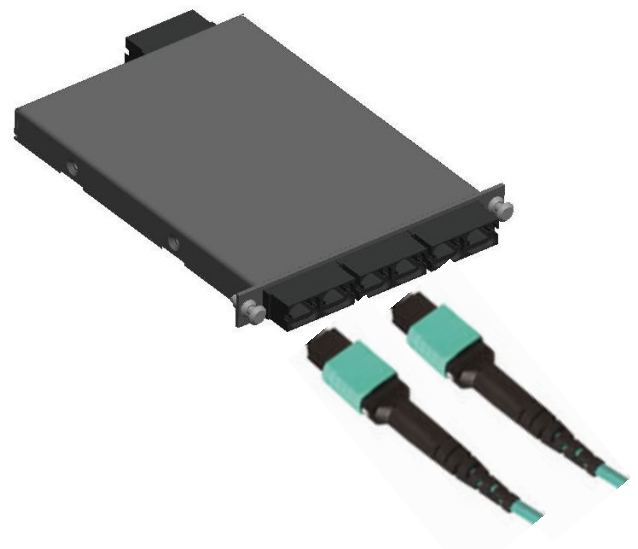
2. Features

- ◆ MPO / MTP connector or MPO hybrid interface patchcord.

- ◆ Available from 12 to 144 fiber Trunk cable, counts in increments of 12 fibers.
- ◆ Available in multi-mode (62.5/125, 10G OM2 / OM3 / OM4, Bend-insensitive fiber, etc.) and single-mode (G652D, G657A1 etc.) fiber types.
- ◆ Generic connector interface available in Simplex or Duplex LC, SC, etc.
- ◆ Customized dual shelf reel and pulling eye keep connectivity protected during payout.
- ◆ Comply with Telcordia GR-1435-CORE, GR-326-CORE, RoHS.

3. Applications

- ◆ For installation in horizontal patch extension from consolidation point to the workstation outlets.
- ◆ High Density Fiber Management.
- ◆ DACS.
- ◆ LAN/WAN Premises



4. Performance

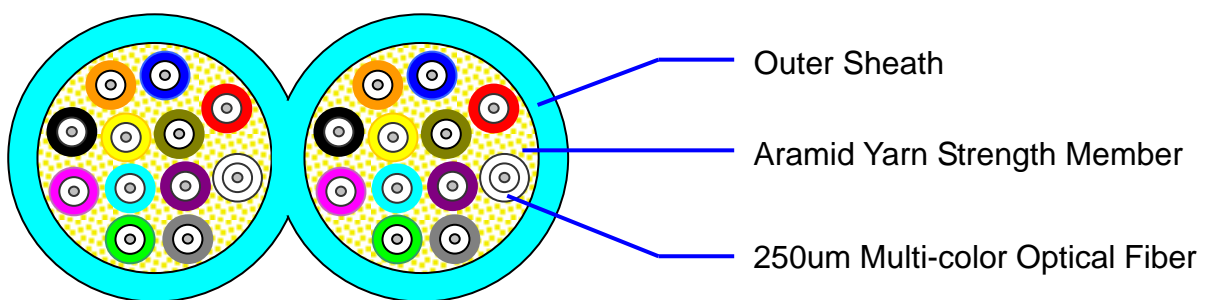
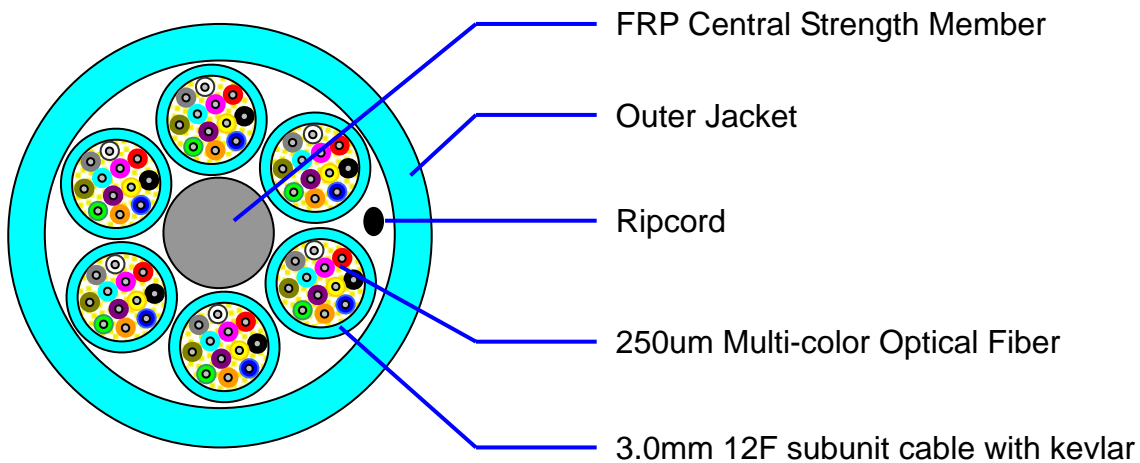
➤ MPO / MTP Termination:

Type	Single-mode (APC polish)		Single-mode (PC polish)		Multi-mode (PC polish)	
Fiber count	8,12, 24 etc.		8,12, 24, etc.		8,12, 24, etc.	
Fiber type	G652D,G657A1, etc.		G652D,G657A1, etc.		62.5/125,OM2,OM3,OM4, etc.	
Maximum Insertion Loss	Elite / Low Loss	Standard	Elite / Low Loss	Standard	Elite / Low Loss	Standard
	≤0.35 dB 0.25 dB Typical	≤0.70 dB 0.5 dB Typical	≤0.35 dB 0.25 dB Typical	≤0.70 dB 0.5 dB Typical	≤0.35 dB 0.2 dB Typical	≤0.5 dB 0.35 dB Typical
Return Loss	≥55 dB		≥45 dB		≥20 dB	
Durability	≥200 times		≥200 times		≥200 times	
Test Wavelength	1310nm / 1550nm		1310nm / 1550nm		850nm / 1300nm	

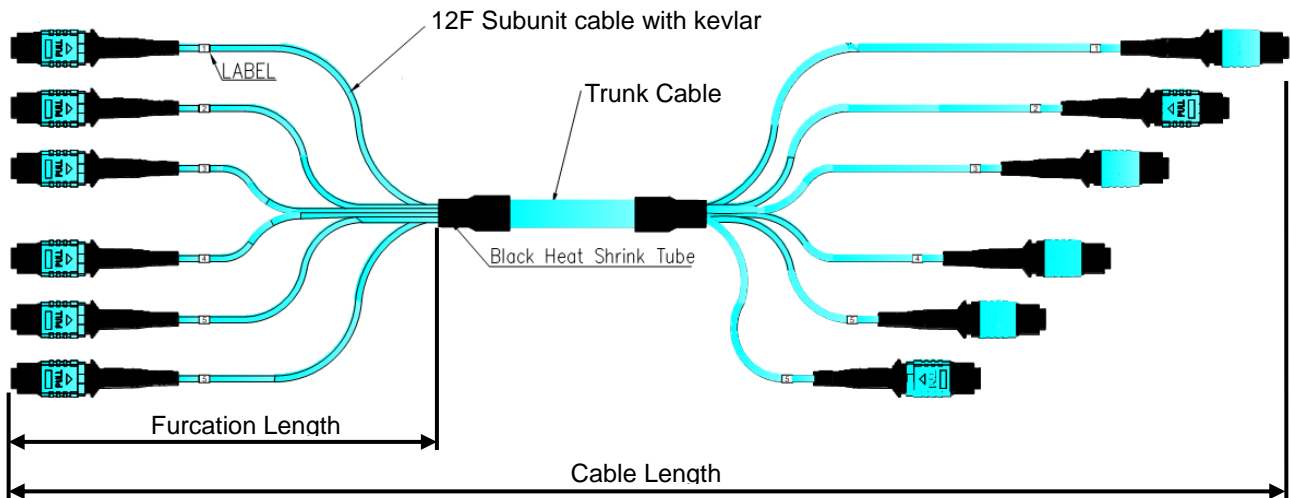
Type	Single-mode (APC polish)		Single-mode (UPC polish)		Multi-mode (UPC polish)	
Fiber type	G652D,G657A1, etc.		G652D,G657A1, etc.		62.5/125,OM2,OM3,OM4, etc.	
Maximum Insertion Loss	Low Loss	Standard	Low Loss	Standard	Low Loss	Standard
	≤0.1 dB 0.05 dB Typical	≤0.30 dB 0.25 dB Typical	≤0.1 dB 0.05 dB Typical	≤0.30 dB 0.25 dB Typical	≤0.1 dB 0.05 dB Typical	≤0.30 dB 0.25 dB Typical
Return Loss	≥60 dB		≥50 dB		≥25 dB	
Durability	≥500 times		≥500 times		≥500 times	

Notes: All MPO/MTP cable assemblies in this document are having Straight Polarity (Type A). Cross Polarity (Type B) or Pair Flip polarity (Type C) is available.

5. Cable Structure



6. Assembly drawing



Length	Tolerance
$0 \leq L < 1M$	+50/-0 mm
$1M \leq L < 10M$	+100/-0 mm
$10M \leq L$	+1% L/-0

*** Above performance and structure refer to Gigalight standard grade performance, flexible specification is available to fit for different installation needs. ***

7. Ordering information

(1) GMF-X - (2) X-XX-X - (3) XXX - (4) XX - (5) XXXX - (6) XXXX - (7) XXX/XXX - (8) XXX/XXX - (9) XXX

(1) TYPE: GigaC™ MPO/MTP Trunk Cable

X=Patchcord Polarity (A=Type A, B=Type B, C=Type C, R=Corning Type)

(2) INSERTION LOSS TYPE: 0=Standard, 1=Elite / Low Loss

FIBER COUNT: 04=4-fiber, 08=8-fiber, 12=12-fiber, 24=24-fiber, etc.

MTP/MPO CONNECTOR TYPE: M=Male, F=Female, H=Male to Female

(3) FIBER TYPE: SM1=G652D, SM2=G657A1, SM3=G657A2

MM1=OM1(62.5/125), MM2=OM2(50/125), MM3=OM3(50/125), MM4=OM4(50/125),

(4) CABLE JACKET TYPE: OR=Riser(OFNR), LS=LSZH, OP=Plenum(OFNP), NA=No jacket

(5) FURCATION LENGTH ON A-END: 0500=500mm, 1000=1000mm, xxxx=Customized Length

(6) FURCATION LENGTH ON B-END: 0500=500mm, 1000=1000mm, xxxx=Customized Length

(7) A-END CONNECTOR: MTP/APC=MTP APC Polishing, MTP/PC=MTP PC Polishing,

MPO/APC=MPO APC Polishing, MPO/PC=MPO PC Polishing

(8) B-END CONNECTOR: MTP/APC=MTP APC Polishing, MTP/PC=MTP PC Polishing,

MPO/APC=MPO APC Polishing, MPO/PC=MPO PC Polishing

(9) OVERALL CABEL LENGTH: XXX=001~999m



深圳市易飞扬通信技术有限公司
Shenzhen Gigalight Technology Co., Ltd

Optical interconnect technology innovator

www.gigalight.com.cn

E-mail: sales@gigalight.com.cn

Web : <http://www.gigalight.com.cn>