

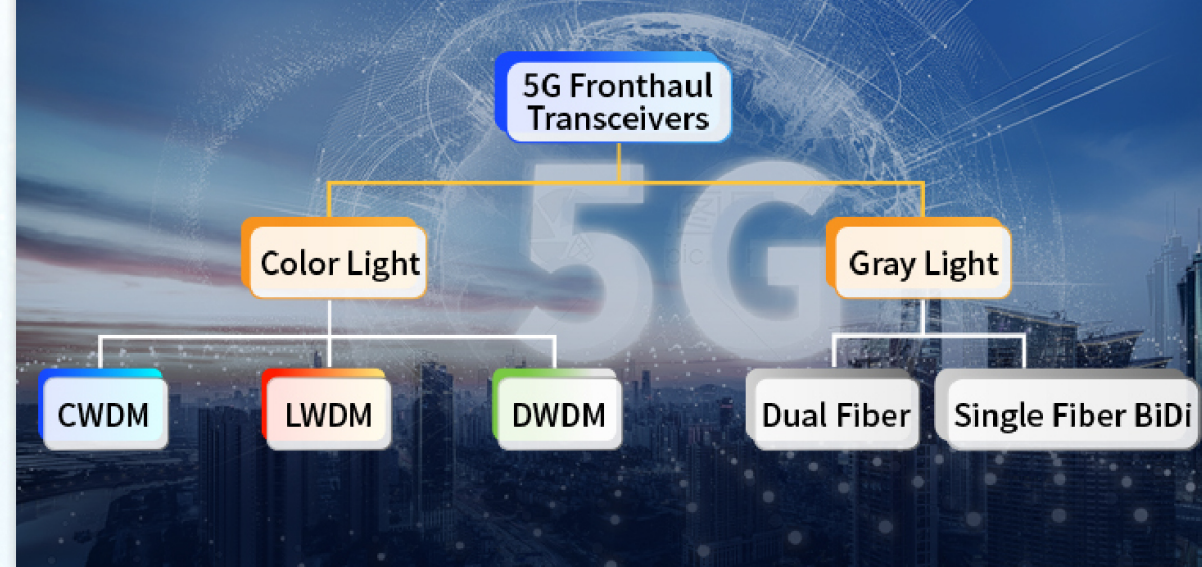
# 5G Fronthaul Base Station Solutions

GIGALIGHT Marketing Report

• 2022 Q4 Vol.12

## 5G Fronthaul Transceiver Solutions

The construction cost of the 5G carrier network is mainly in the fronthaul, of which optical transceivers account for the largest proportion.



## Highlights of GIGALIGHT's 5G Fronthaul Transceivers



Low Cost & Large-Scale Mass Production



Carrier-Grade & Long-Term Reliability



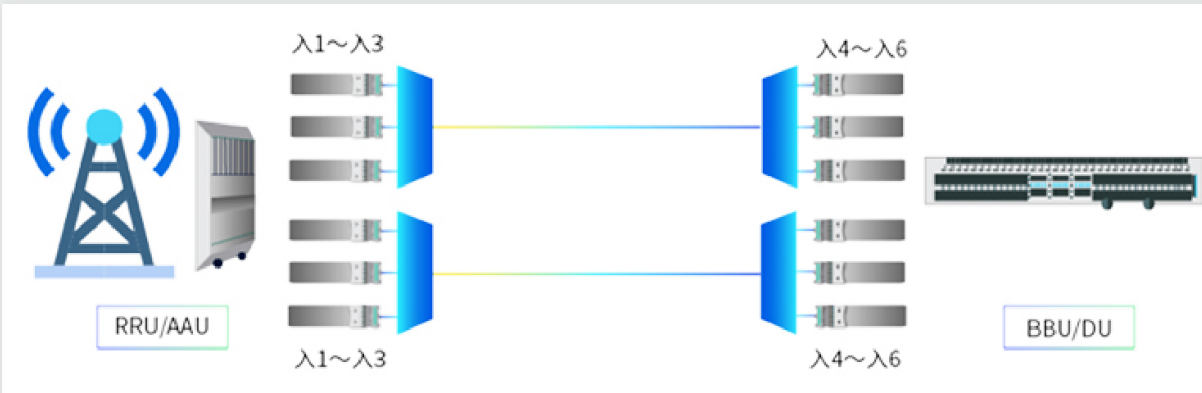
Airtight Package & I-Temp (-40°C to +85°C)



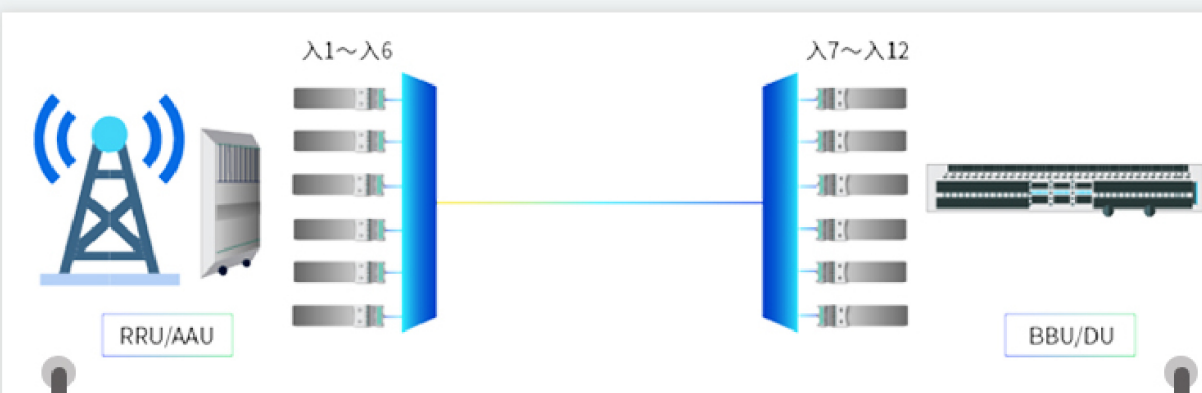
Suitable for Harsh Outdoor Environments

## Color Light Solutions

6 wavelengths:



12 wavelengths:



### 10G SFP+ CWDM O-band

- Up to 10km
- DML+PIN
- Dual LC
- RX Sensitivity -14.4dBm
- Power Consumption <1W
- TX Optical Power -4dBm to -3dBm
- 1270nm~1370nm, 6CH



From \$13

### 10G SFP+ CWDM C-band

- Up to 10km
- DML+PIN
- Dual LC
- RX Sensitivity -14.4dBm
- Power Consumption <1W
- TX Optical Power -4dBm to -3dBm
- 1470nm~1570nm, 6CH



From \$16

### 25G SFP28 CWDM O-band

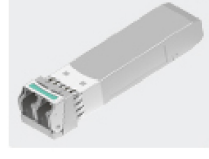
- Up to 10km
- DML+PIN
- Dual LC
- RX Sensitivity -13.3dBm
- Power Consumption <1.5W
- TX Optical Power 1dBm to 7dBm
- 1270nm~1370nm, 6CH



From \$27

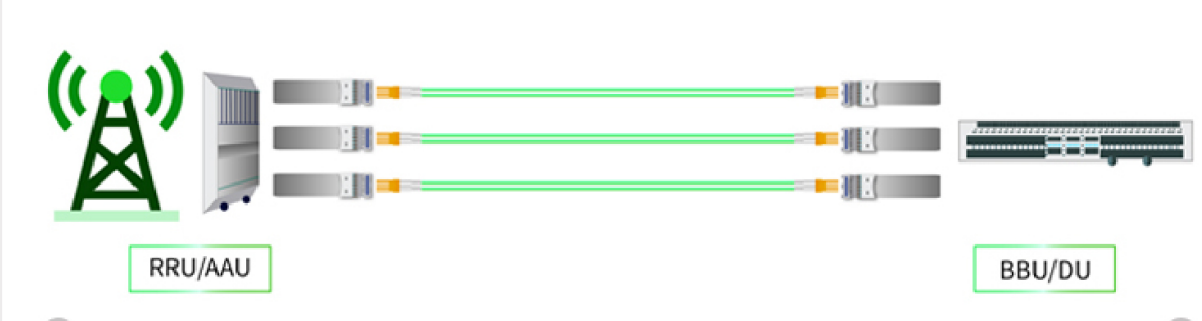
### 25G SFP28 CWDM C-band

- Up to 10km
- EML+APD
- Dual LC
- RX Sensitivity -18dBm
- Power Consumption <1.8W
- TX Optical Power -2dBm to 4dBm
- 1470nm~1570nm, 6CH



From \$204

## Dual Fiber Gray Light Solutions



### 10G SFP+

- Up to 10km
- DML+PIN
- Dual LC
- 1310nm
- RX Sensitivity -14.4dBm
- Power Consumption <1W
- TX Optical Power -8.5dBm to 0dBm



From \$9

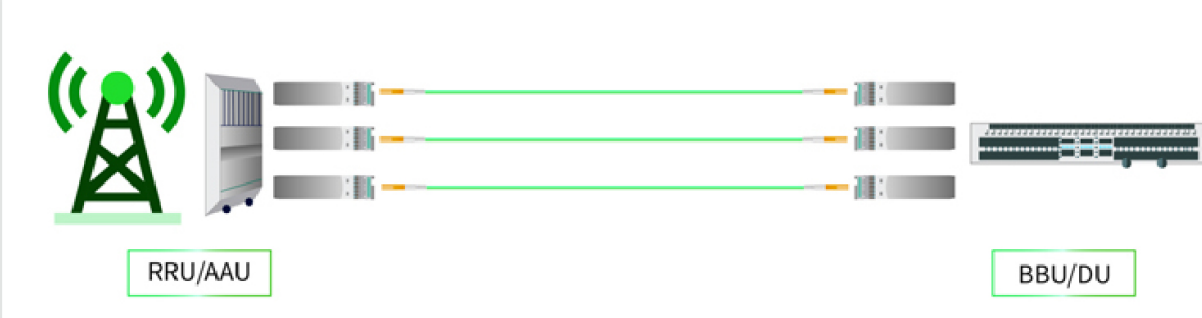
### 25G SFP+

- Up to 10km
- DML+PIN
- Dual LC
- 1310nm
- RX Sensitivity -13.9dBm
- Power Consumption <1.5W
- TX Optical Power 0dBm to 6dBm



From \$32

## Single Fiber BiDi Gray Light Solutions



### 10G SFP+ BiDi

- Up to 10km
- DML+PIN
- Single LC
- RX Sensitivity -14.4dBm
- Power Consumption <1W
- TX Optical Power -4dBm to -3dBm
- 1270nm/1330nm



From \$11

### 10G SFP+ BiDi

- Up to 15km
- DML+PIN
- Single LC
- RX Sensitivity -14.4dBm
- Power Consumption <1W
- TX Optical Power -4dBm to -3dBm
- 1270nm/1330nm



From \$13

### 25G SFP28 BiDi

- Up to 10km
- DML+PIN
- Single LC
- RX Sensitivity -13.9dBm
- Power Consumption <1.5W
- TX Optical Power 0dBm to 6dBm
- 1270nm/1330nm



From \$38

### 25G SFP28 BiDi

- Up to 15km
- DML+PIN
- Single LC
- RX Sensitivity -13.9dBm
- Power Consumption <1.5W
- TX Optical Power 0dBm to 6dBm
- 1270nm/1330nm



From \$38

Gigalight  
Open Optical Network Device Explorer

To order, please reply to this email and we will contact you shortly.

